



Students Feedback on Curriculum - Feedback Analysis Report

Academic Year : 2023-2024

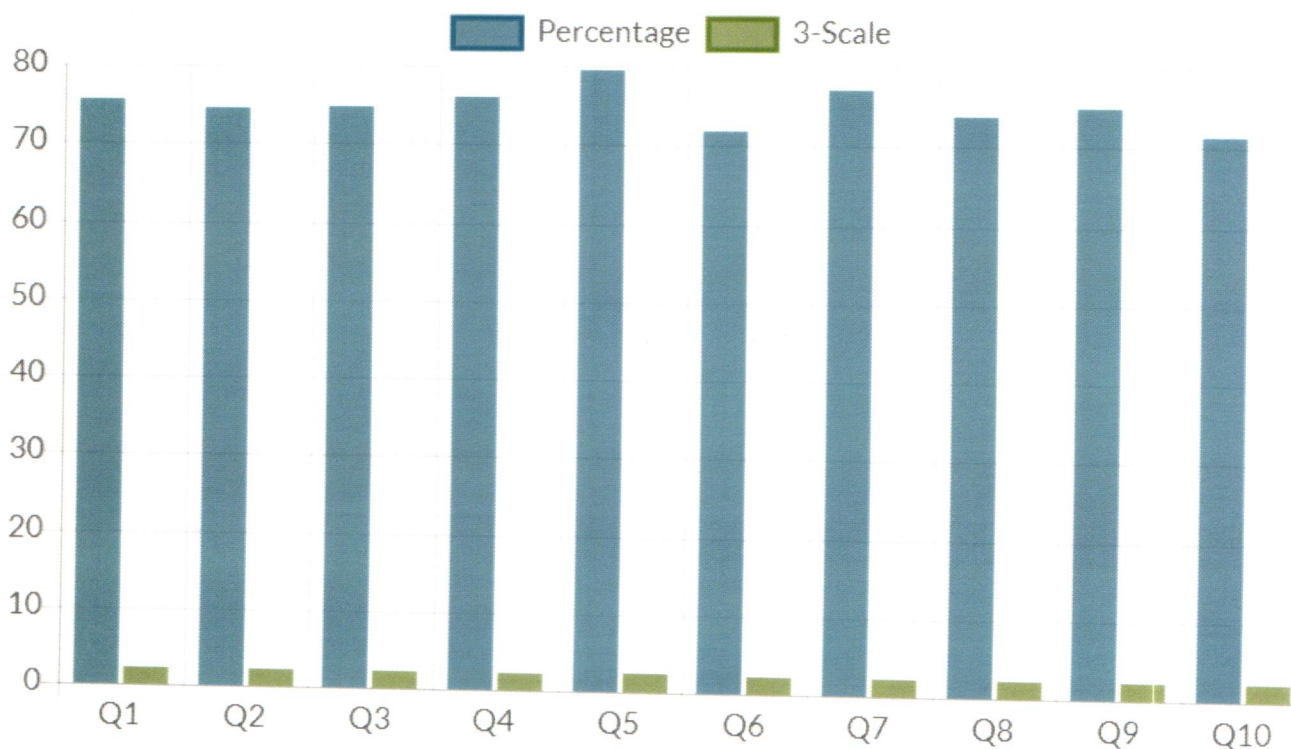
S.No	Question's	Excellent	Good	Fair	Poor	Total Weightage	Percentage	3-Scale Weightage
1	How would you rate the curriculum communication skills, which lets you share your ideas and opinions	152	177	56	43	1294	75.58%	2.27
2	How would you rank the function of the curriculum in improving your clinical abilities	133	180	88	27	1275	74.47%	2.23
3	Rate the effectiveness of the periodically updated curriculum and its effectiveness in promoting creative thoughts.	143	164	95	26	1280	74.77%	2.24
4	Evaluate the curriculum's role in helping you gain confidence, acquire life skills, and become proficient in this constantly evolving world.	148	179	70	31	1300	75.93%	2.28
5	How do u rank the teachers use of contemporary teaching aids, PowerPoint presentations, online resources, multimedia, e-content, etc. When instructing in hybrid classrooms.	196	145	57	30	1363	79.61%	2.39
6	Assign the Institute's extracurricular activities an overall rating.	136	163	69	60	1231	71.90%	2.16
7	Assessment regarding the teachers' internal evaluation procedure	139	205	65	19	1320	77.10%	2.31
8	How would you rate the relevancy of Institute's BDS/MDS programs, and the information is updated at appropriate intervals?	136	181	66	45	1264	73.83%	2.21
9	Rate the Completion of all aspects of the university-established syllabus on time.	140	184	65	39	1281	74.82%	2.24
10	Rank the function of curriculum design in improving your employability.	124	173	76	55	1222	71.38%	2.14
<b>AVERAGE SCORE</b>						<b>1,283.00</b>	<b>74.94%</b>	<b>2.25</b>



Authorized Signature

Authorized Person

Students Feedback on Curriculum -Chart





Teachers Feedback on Curriculum - Feedback Analysis Report

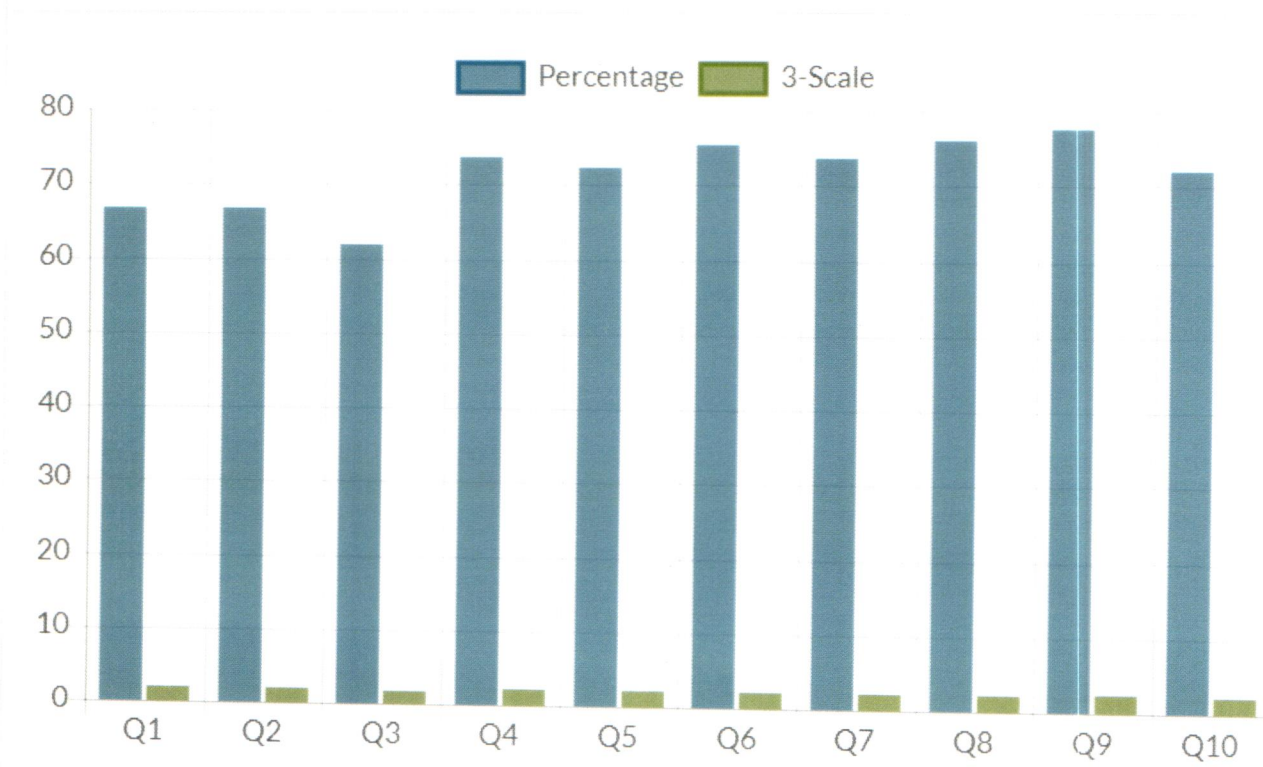
Academic Year : 2023-2024

S.No	Question's	Excellent	Good	Fair	Poor	Total Weightage	Percentage	3-Scale Weightage
1	How would you rate the DCI/University-recommended curriculum's skill-based and intention to prepare future generations?	17	33	10	16	203	66.78%	2.00
2	Rate the depth of course material sufficiency to produce significant learning results.	15	28	26	7	203	66.78%	2.00
3	How would you rank the adequacy of the curriculum to close the knowledge gap between academics and clinical standards and contemporary worldwide situations?	8	26	36	6	188	61.84%	1.86
4	Rate the sufficiency of the allotted time, and its possibility to finish the syllabus.	14	45	16	1	224	73.68%	2.21
5	Are the syllabus's units arranged in the ideal sequence? Rank it.	12	48	12	4	220	72.37%	2.17
6	Rate if the suggested reference books and textbooks are competent and correspond with the syllabus.	12	54	9	1	229	75.33%	2.26
7	Evaluate the college's ICT (information and communication technology) infrastructures and educational facilities and rank the adequacy of delivering the curriculum effectively.	22	37	8	9	224	73.68%	2.21
8	How would you rate the sufficiency of the Institute books and high-quality reference resources for teaching the subject matter?	23	40	6	7	231	75.99%	2.28
9	How would you rank the Institute's co-curricular activities?	31	30	7	8	236	77.63%	2.33
10	Evaluate the effectiveness and improvement of the curriculum to foster creative thinking.	21	33	14	8	219	72.04%	2.16
<b>AVERAGE SCORE</b>						<b>217.70</b>	<b>71.61%</b>	<b>2.15</b>



Authorized Signature  
Authorized Person

Teachers Feedback on Curriculum - Chart





Employers Feedback on Curriculum - Feedback Analysis Report

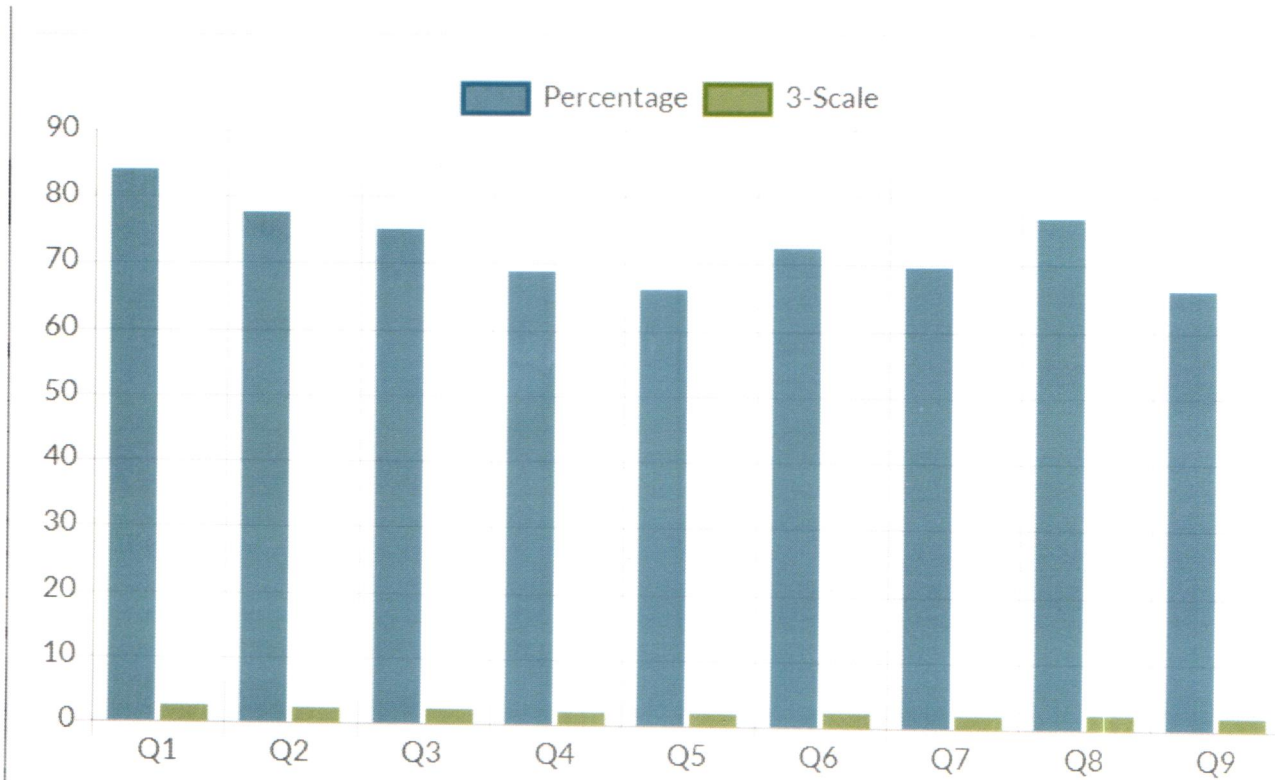
Academic Year : 2023-2024

S.No	Question's	Excellent	Good	Fair	Poor	Total Weightage	Percentage	3-Scale Weightage
1	How relevant do you think the courses are, Regarding the program?	14	11	2	1	94	83.93%	2.52
2	How would you rank their level of competence, Considering the Professional courses included in the program?	10	13	3	2	87	77.68%	2.33
3	Rank the courses in terms of extra learning or self-learning based on their design	9	11	7	1	84	75.00%	2.25
4	How relevant are the experiments to the practical application in your opinion?	7	10	8	3	77	68.75%	2.06
5	How would you rank the elective offerings, In terms of professional accomplishments?	5	12	7	4	74	66.07%	1.98
6	How do you rank the courses' distribution of credits and contact hours (L-TP)?	7	12	8	1	81	72.32%	2.17
7	Rate the level to which the courses contribute to the development of (a) knowledge and understanding (b) skills and (c) attitudes.	5	14	7	2	78	69.64%	2.09
8	Do score the courses according to their applicability in order to assure General Skills, Practice Management, Patient Care - Diagnosis, Treatment Planning, and Treatment.	9	14	3	2	86	76.79%	2.30
9	How would you rank the course information in terms of the LAB components, the dissection, and the clinical procedure?	8	10	2	8	74	66.07%	1.98
<b>AVERAGE SCORE</b>						<b>81.67</b>	<b>72.92%</b>	<b>2.19</b>



Authorized Signature  
 Authorized Person

Employers Feedback on Curriculum - Chart





Alumni Feedback on Curriculum - Feedback Analysis Report

Academic Year : 2023-2024

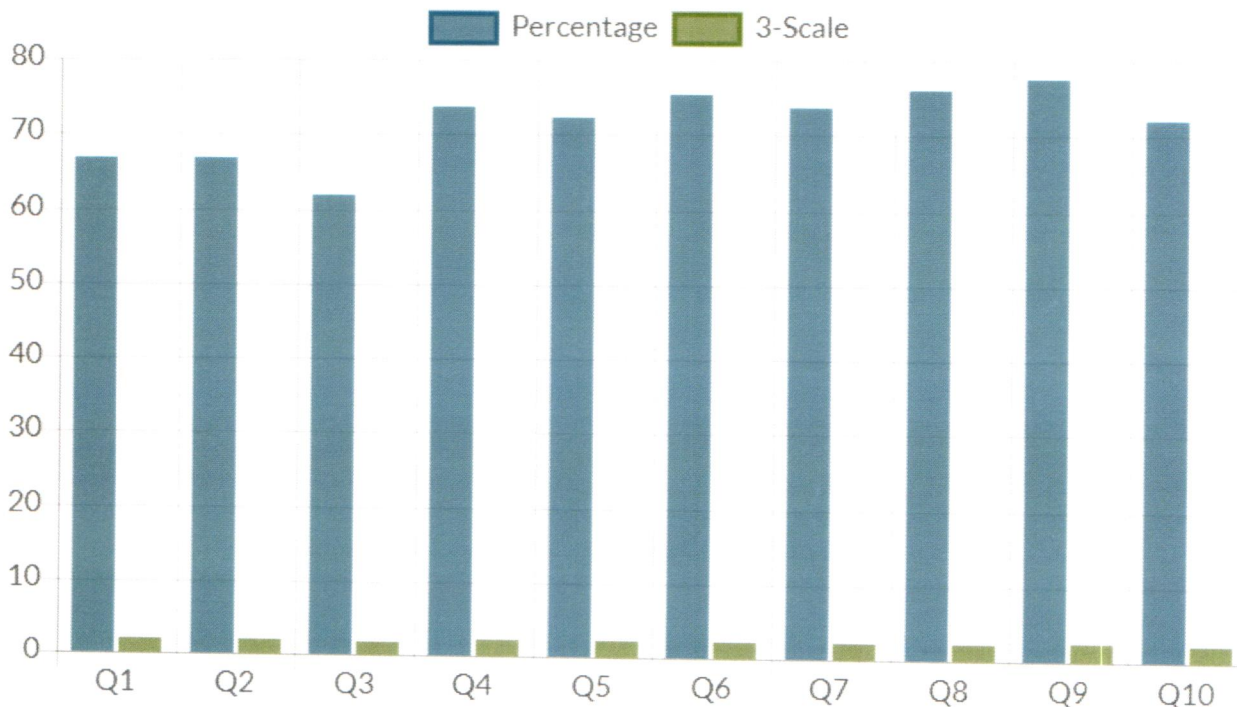
S.No	Question's	Excellent	Good	Fair	Poor	Total Weightage	Percentage	3-Scale Weightage
1	What is your assessment of the current state of skill-based curriculum revision?	6	12	3	1	67	76.14%	2.28
2	How satisfied are you with the course material and the job's dependability in meeting demands around the world?	6	8	5	3	61	69.32%	2.08
3	How useful do you think a career-focused curriculum was for helping you land a job right away or later on after graduation?	5	7	6	4	57	64.77%	1.94
4	How would you rank the supportive and well-rounded academic environment at the Institute, which helped you achieve success in your life?	5	10	3	4	60	68.18%	2.05
5	How well do you think the current curriculum is preparing graduates for jobs, services, and an entrepreneurial mindset in terms of employability?	7	6	5	4	60	68.18%	2.05
6	In terms of teaching the students values related to ethics, the environment, social responsibility, and gender sensitivity, how would you rank the curriculum?	4	13	2	3	62	70.45%	2.11
7	How would you rank the curriculum in terms of covering subjects that can help students perform better in the workplace?	5	7	8	2	59	67.05%	2.01
8	In terms of learning values, skills, knowledge, attitude, analytical capacities, application, relevance, and practical orientation to real-life circumstances, how well do you think the current curriculum meets the expectations?	8	5	7	2	63	71.59%	2.15
9	How well do you think the curriculum prepares students for higher education at reputable domestic and international universities?	8	6	3	5	61	69.32%	2.08
10	How well do you think the teachers have guided the students' general development of their personalities and encouraged them to use e-journals, e-resources, and extracurricular activities alongside research projects?	7	10	4	1	67	76.14%	2.28
<b>AVERAGE SCORE</b>						<b>61.70</b>	<b>70.11%</b>	<b>2.10</b>



Authorized Signature

Authorized Person

Alumni Feedback on Curriculum - Chart





Professionals Feedback on Curriculum - Feedback Analysis Report

Academic Year : 2023-2024

S.No	Question's	Excellent	Good	Fair	Poor	Total Weightage	Percentage	3-Scale Weightag
1	How pertinent do you think the courses are, in view of the BDS & MDS program?	5	8	4	1	53	73.61%	2.21
2	How would you rank the essential details provided about each program's curriculum on the college website?	6	9	2	1	56	77.78%	2.33
3	How do you rank the accomplishment of the courses related to profession that are included in the program?	6	10	2	0	58	80.56%	2.42
4	How would you rank the courses in terms of additional learning or self-learning, In light of the course design?	10	6	2	0	62	86.11%	2.58
5	How do you evaluate the value-added and certificate courses that are offered, In terms of career growth?	6	10	2	0	58	80.56%	2.42
6	How much do you think the courses contribute to the development of skills and attitudes as well as understanding and acceptance of the program?	7	9	0	2	57	79.17%	2.37
7	How relevant do you think the courses are, In terms of general skills, practice management, patient care, diagnosis, and treatment planning?	8	9	0	1	60	83.33%	2.50
8	How would you rank the appropriate updating of the curriculum to meet professional requirements in the syllabus and curriculum?	3	12	3	0	54	75.00%	2.25
9	How would you rank the institution overall for providing a standard curriculum?	12	6	0	0	66	91.67%	2.75
10	How would you rank the flexibility of the curriculum in both online and offline modes?	7	3	5	3	50	69.44%	2.08
<b>AVERAGE SCORE</b>						<b>57.40</b>	<b>79.72%</b>	<b>2.39</b>



Authorized Signature  
  
 Authorized Person

Professionals Feedback on Curriculum - Chart

